

TECHNICAL SPECIFICATIONS

Engine

Engine Model	YANMAR 3TNV88F
Number of Cylinders	3
Max. Torque/Speed	82.6-91.4/1320±100N·m/rpm
Displacement	1.642L

Hydraulic system

Max. Main Pump Flow	108L/min
Main Safety Valve Pressure	24.2MPa

Main Performance

Bucket Digging Force	30kN
Arm Digging Force	19kN
Max. Traction Force	35.1kN
Max. Walking Speed	4.2km/h
Min. Walking Speed	2.7km/h
Rotary Speed	8.4r/min
Gradeability	30°
Ground Pressure	34.7kPa

Oil Capacity

Fuel Tank	40L
Hydraulic Tank	20L
Engine Oil	6.7L



LOVOL HEAVY INDUSTRY GROUP CO.,LTD.

Address: No. 75, Huanghe East Road, Huangdao District, Qingdao City, Shandong Province, China.
Website: en.wlovol.com E-mail: lovol_overseas@global.lovol.com TEL: +86-532-86907190 Facebook: Cons Lovol

As manufacturer, LOVOL has right to constantly upgrade and improve our products without informing to customers.
The pictures in literatures are for reference only, the detailed specifications are subject to real products.



Rated Power	18.2kW/2200rpm
Operating Weight	3800kg
Bucket Capacity	0.12 m³

FR36F-u
EXCAVATOR



FLEXIBILITY

Tailless design

Turning radius 850mm

Boom side shift

Small space corner operation

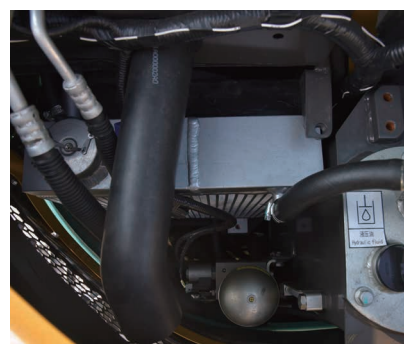
RELIABILITY

Imported engine, strong performance, high reliability, low noise design

Electrically controlled power control, more power, stronger, more fuel consumption

Customized main control spool, more precise micro-control

Slope turning is effortless with the leading rotary and travel motors



EFFICIENCY

Boom bucket rod assembly explosion-proof valve

prevent falling, oil spray

Load sensitive flow control

Allocate the appropriate flow according to the demand of the load

Large working range

Maximum excavation radius 5225mm

Precise distribution

The right flow rate can be allocated according to the demand of the load.

Large bucket capacity

bucket capacity 0.12m³, high working efficiency

COMFORT



Humanized design

Increase the water cup holder, increase the control bracket

Comfortable operation

Increased backrest height and reversible backrest

New appearance design, proportion coordination, high-end atmosphere

High backrest, backrest can be turned over, adjust the cushion backrest hardness, more comfortable

New interior layout, ergonomic, enhanced driving comfort

Intelligent TBOX, add Ethernet, can achieve remote OTA.

SAFETY



Cab meets certification requirements

Cab meets FOPS/TOPS standards and CE certification

Good stability

Chassis 1700mm, good stability

TYPE-C/USB charging port, easy access to electricity, reliable and durable

The three-level maintenance filter element is adopted to effectively protect the engine and extend the service life

The standard three-way ball valve enables easy switching between fittings and pipelines



INCREASE YOUR PRODUCTIVITY AND PROFIT WITH LOVOL ATTACHMENTS

You can easily expand the performance of your machine by utilizing any of the variety of LOVOL Attachments. Each LOVOL Attachments is designed to fit the weight and horsepower of LOVOL Excavator for improved performance, safety, and stability.



Quick Coupler



Hydraulic Hammer



Hydraulic Rammer



Auger



Standard Bucket



STANDARD CONFIGURATION

Engine

Turbocharged 4 stroke water-cooling electronic injection type
Complying with EURO V emissions
Automatic idle system
Engine oil pan drain valve
Radiator with protective net
Double filter elements dry air filter element
Air pre-filter
Air intake heater
Fan guard

Hydraulic System

Automatic hydraulic system (confluence system)
Anti-swing valve
Boom and arm block valve
Multi-stage filtration system
Cylinder buffer device
Auxiliary hydraulic valve
Automatic two-speed travel motor

Electronic Control System

24V power supply
Diagnostic interface
Emergency stop switch
Display brightness adjustment
Maintenance tips
Automatic diagnostic system
Automatic idle system
One-touch pressure augmentation
Safe stop / start function
Main power switch
Anti-theft system
Engine starting protection
Multilingual display

Cab

Ashtray
Cigar lighter
Seat belt
Front sunshade
Storage box
Escape hammer
Thermostatically controlled air conditioner
Shock absorber (silicone oil and rubber pad)
Flexible antenna
Radio (with interfaces of MP3 and USB)
Hydraulic safety lock
Sun-protection safety glass
Floor mat
Large storage area
Pull-up front window
Removable lower windshield
Sunshade window
Front-bottom glass protective screening
Wipers
Open skylight

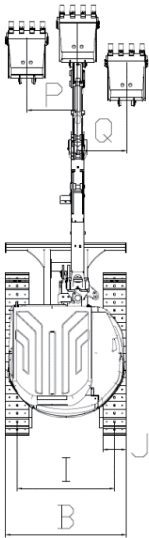
Swing Platform

Passage with railing
Tool box
Anti-skid plate
Large pedal
Large armrest
Bottom protection plate
Anti-collision beam

Chassis

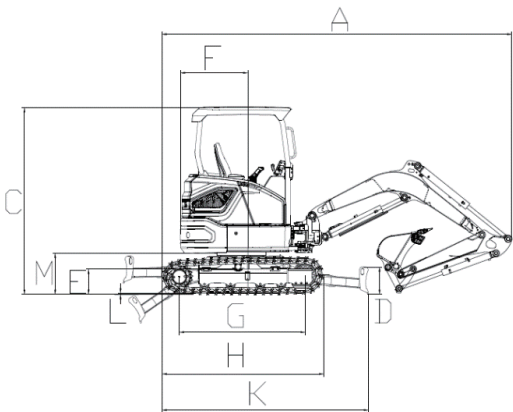
Fixed chassis
300mm, three-tooth track shoe

TECHNICAL SPECIFICATIONS



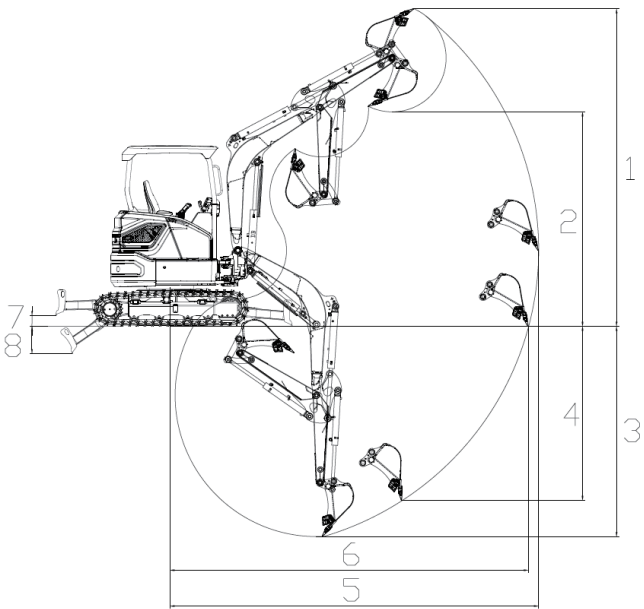
Working Range

Max. Digging Height	1	4840mm
Max. Dumping Height	2	3425mm
Max. Digging Depth	3	2890mm
Max. Vertical Digging Depth	4	2580mm
Max. Digging Radius	5	5225mm
Max. Ground Digging Radius	6	5105mm
Min. Turning Radius	7	/



Dimensions

Shipping Length	A	4730mm
Shipping Width	B	1700mm
Boom Height	C	2470mm
Dozer Blade Height	D	348mm
Min. Ground Clearance	E	300mm
Tail Turning Radius	F	850mm
Length to Center of Rollers	G	1620mm
Track Length	H	2094mm
Track Gauge	I	1400mm
Track Shoe Width	J	300mm
Shipping Ground Length	K	2614.5mm
Track Plate Height	L	15mm
Ground Clearance of Counter Weight	M	537mm



Other Specifications

Boom Length	2375mm
Arm Length	1325mm
Track Section Number (each side)	43
Track Roller Number	4