

Technical sheet :

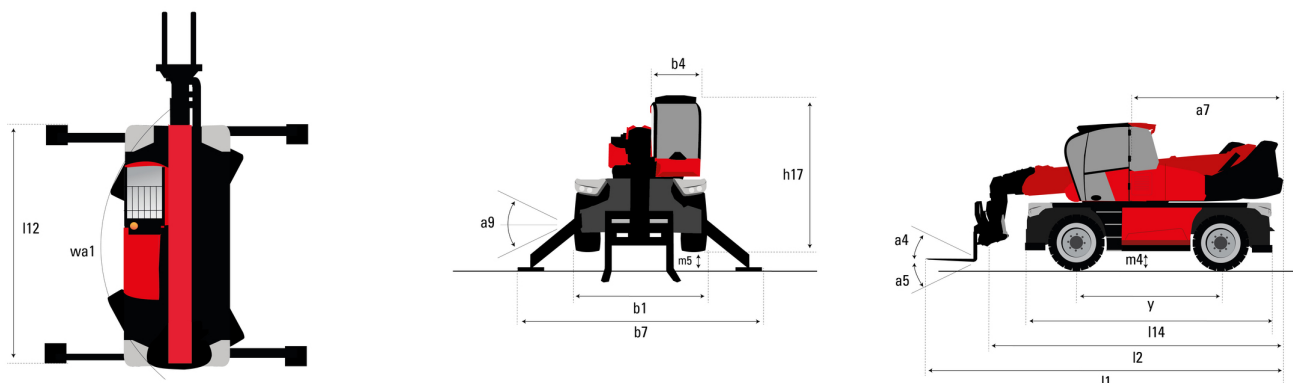
MRT 4080

VISION +



Capacities		Metric	Imperial
Max. capacity	Q	8000 kg	17637 lb
Max. lifting height		40 m	131 ft 3 in
Max. outreach		27 m	88 ft 7 in
Weight and dimensions			
Overall length (with forks)	l1	10.78 m	35 ft 4 in
Length to face of forks	l2	9.58 m	31 ft 5 in
Overall width	b1	2.51 m	8 ft 3 in
Overall height	h17	3.27 m	10 ft 9 in
Overall cab width	b4	0.96 m	3 ft 2 in
External turning radius (over tyres)	Wa1	5.06 m	16 ft 7 in
Ground clearance	m4	0.44 m	1 ft 5 in
Wheelbase	y	3.75 m	12 ft 4 in
Tilt-up angle	a4	13 °	13 °
Tilt-down angle	a5	108 °	108 °
Turret rotation		360 °	360 °
Overall weight		27800 kg	61288 lb
Forks length / width / section	l / e / s	1200 mm x 100 mm x 70 mm	47 in x 4 in x 3 in
Wheels			
Standard tires		ASCENSO - WLB550 - 17.5-25	ASCENSO - WLB550 - 17.5-25
Drive wheels (front / rear)		2 / 2	2 / 2
Steering mode		2 wheel steer, 4 wheel steer, Crab mode	2 wheel steer, 4 wheel steer, Crab mode
Stabilisers			
Stabilizers Type		Telescopic Triplex	Telescopic Triplex
Controls for stabs		Stabs Commands Individual or Simultaneous	Stabs Commands Individual or Simultaneous
Engine			
Engine brand		Yanmar	Yanmar
Engine norm		Stage V, Tier 4	Stage V, Tier 4
Engine model		4TN107FTT-6SMU2	4TN107FTT-6SMU2
Engine power (Hp / kW)		211 Hp / 155 kW	211 Hp / 155 kW
Max. torque / Engine rotation (min)		805 Nm @ 1500 rpm	594 ft/lbs @ 1500 rpm
Number of cylinders - Capacity of cylinders		4 - 4567 cm ³	4 - 279 in ³
Engine cooling system		Water cooled	Water cooled
Electric circuit			
Number of batteries / Battery voltage		2 x 12 V	2 x 12 V
12V Battery capacity		180 Ah	180 Ah
Battery starting current		(EN)1200 A	(EN)1200 A
Transmission			
Transmission type		Hydrostatic with CVT	Hydrostatic with CVT
Max. travel speed		37 km/h	23 mph
Parking brake		Automatic negative parking brake	Automatic negative parking brake
Service brake		Oil-immersed multi-discs braking on front & rear axles	Oil-immersed multi-discs braking on front & rear axles
Hydraulics			
Hydraulic pump type		Variable displacement pump	Variable displacement pump
Hydraulic flow		172 l/min	45 US gpm
Hydraulic Pressure		350 bar	5076 PSI
Tank capacities			
Engine oil		13 l	3 US gal
Fuel tank capacity		320 l	85 US gal
Diesel Exhaust fluid (AdBlue® type) tank capacity		24 l	6 US gal
Miscellaneous			
Steering wheels (front / rear)		2 / 2	2 / 2
Controls		2 Joysticks	2 Joysticks
Cab certification		Cabin ROPS - FOPS level 2	Cabin ROPS - FOPS level 2
Attachment recognition system (E-Reco)		Standard	Standard

MRT 4080 - Dimensional drawing



Other data		Metric	Imperial
Length of frame	l14	6.80 m	22 ft 4 in
Counterweight offset (turret at 90°)	a7	3.90 m	12 ft 10 in
Overall length at stabilisers	l12	6.50 m	21 ft 4 in
Overall width with stabilisers extended	b7	7.42 m	24 ft 4 in
Frame leveling corrector	a9	+/- 8 °	+/- 8 °
Ground clearance under front tires on stabilizers	m5	0.40 m	1 ft 4 in

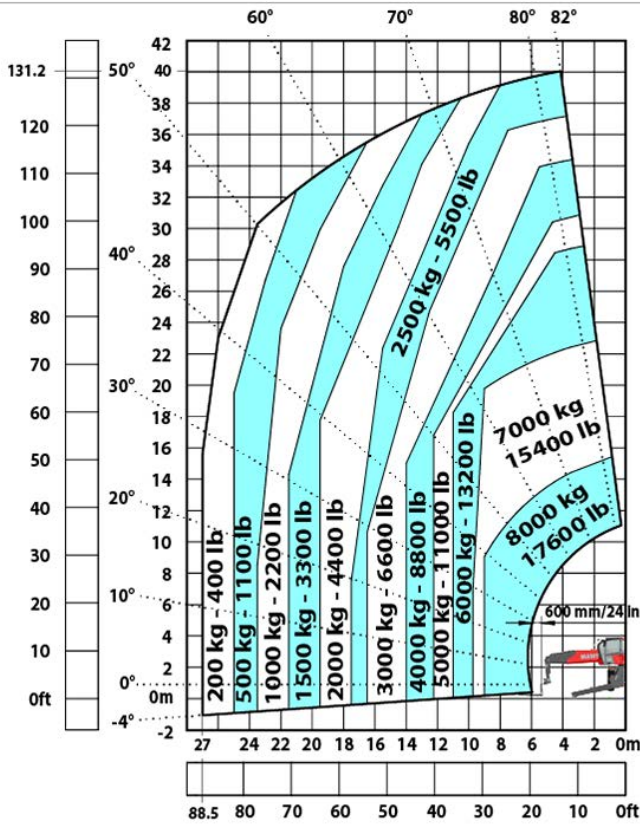
Equipment

Standard
Attachment recognition system - E-reco
Automatic levelling of the outriggers
Automatic parking brake
Easy step
Hydraulic transmission with Continuously Variable Transmission (CVT)
LED light at the cab entrance
LEONARDO touch screen - 12 in. (305 mm)
Manitou Safety System (MSS) - Load Indicating and Limiting Device
Mechanical suspension cloth seat - Electrically operated tilting - GRAMMER
Rear camera with cab display screen
Work platform pre-fitting and remote control

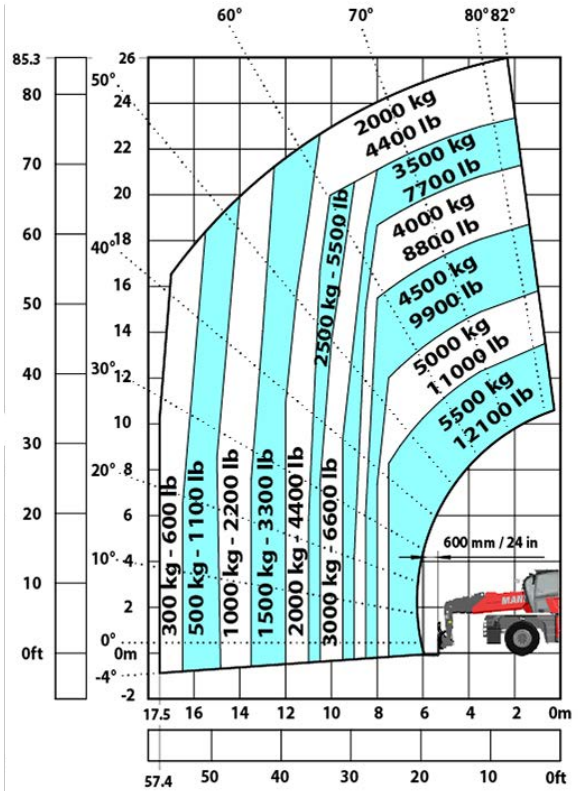
Optional
Air suspension cloth seat - Electrically operated tilting - GRAMMER
Bi-energy system
Boom suspension "Active CRC"
Easy link
Heater and automatic air conditioning
Cameras on boom head (Telescopic part) and right hand side - With additional cab screen
LED corner lights around the machine
LED front right and left working lights (x2)
LED rear right and left working lights (x2)
LED work lights - On boom head (Telescopic part)
Stop and Start
Wind sensor (Anemometer)

MRT 4080 - Load chart

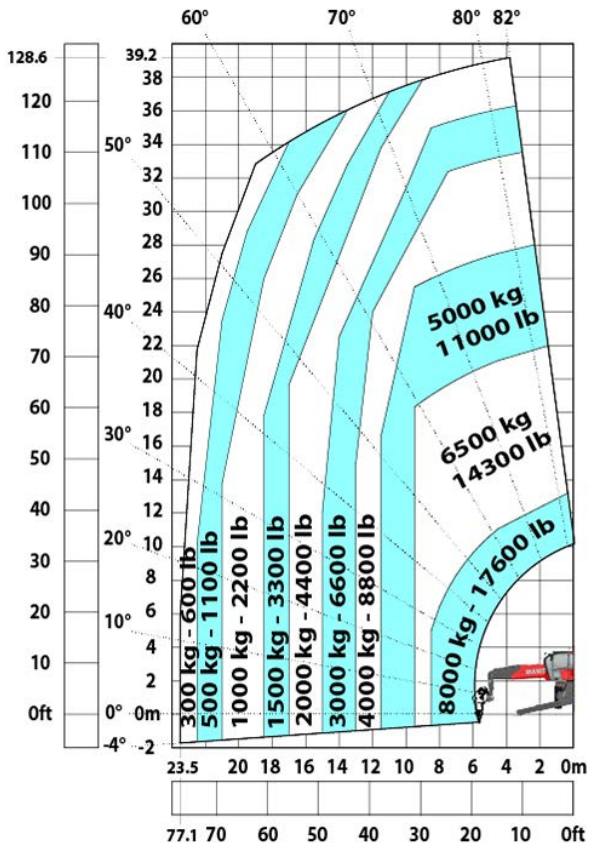
Machine on lowered stabilisers with forks



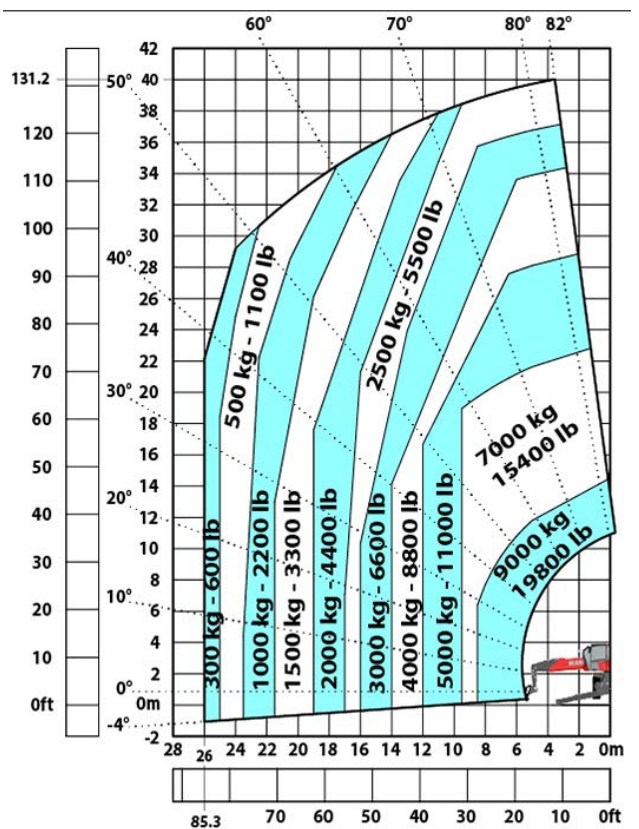
Machine on tires with forks



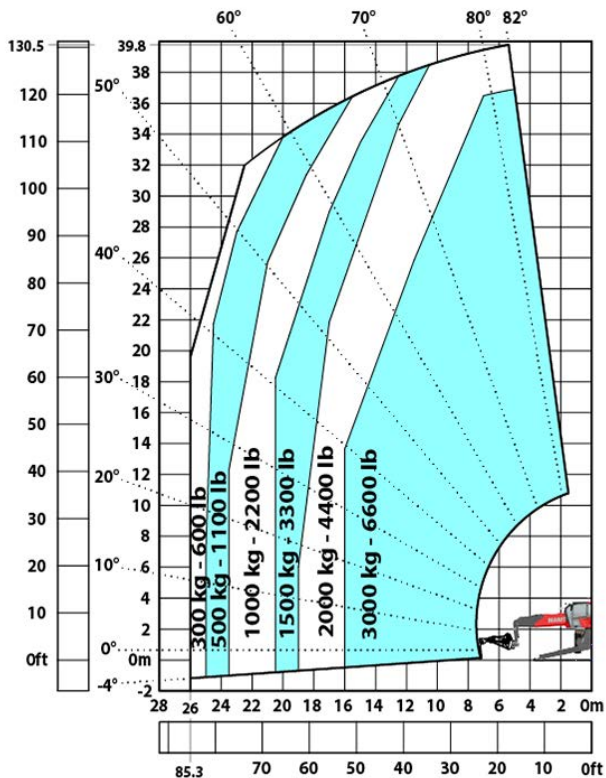
Machine on lowered stabilisers with winch 8000 kg



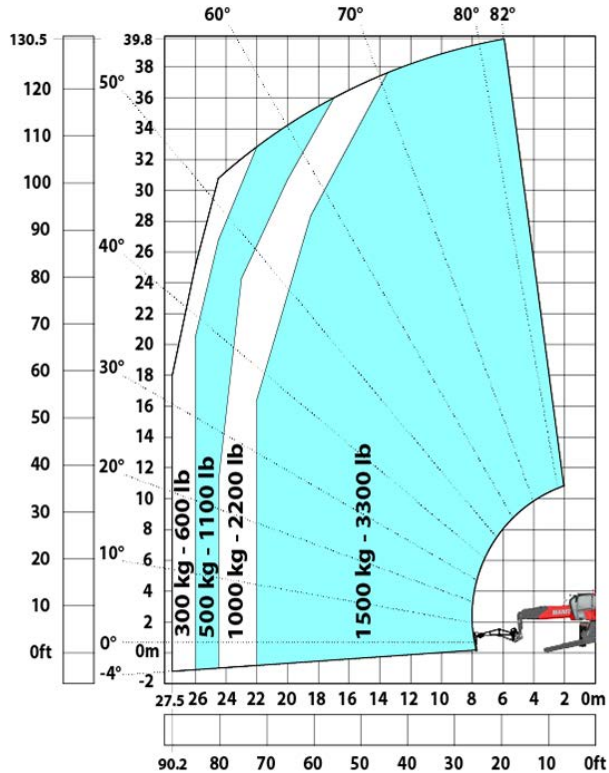
Machine on lowered stabilisers with hook 9000 kg



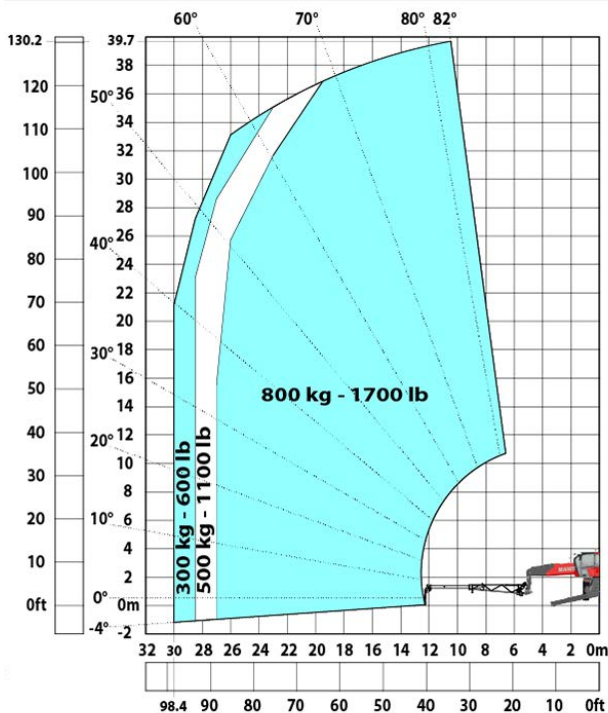
Machine on lowered stabilisers with 3000 kg jib
(JW 2100-3000 62M)



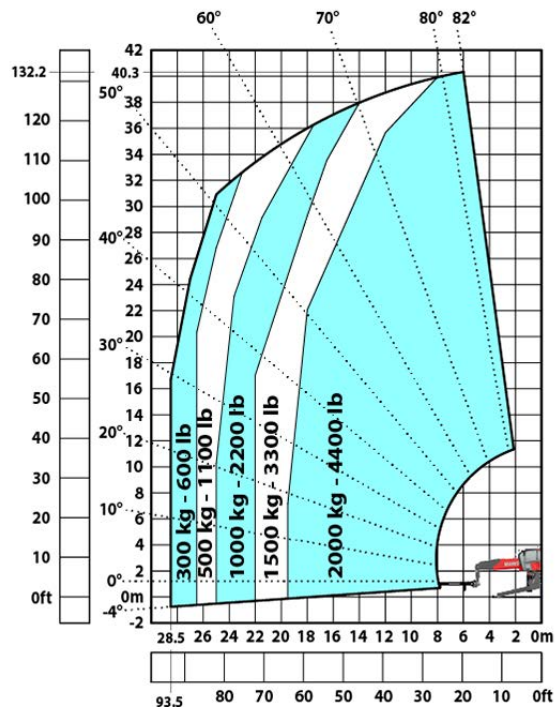
Machine on lowered stabilisers with 1500 kg jib
(JW 3000-1500 71M)



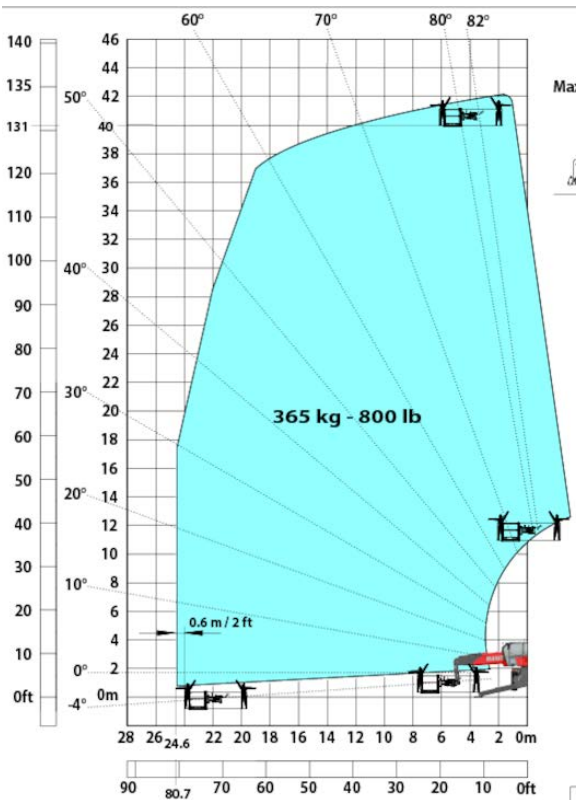
Machine on lowered stabilisers with 800 kg jib
(JWE 7000-800 0,8T)



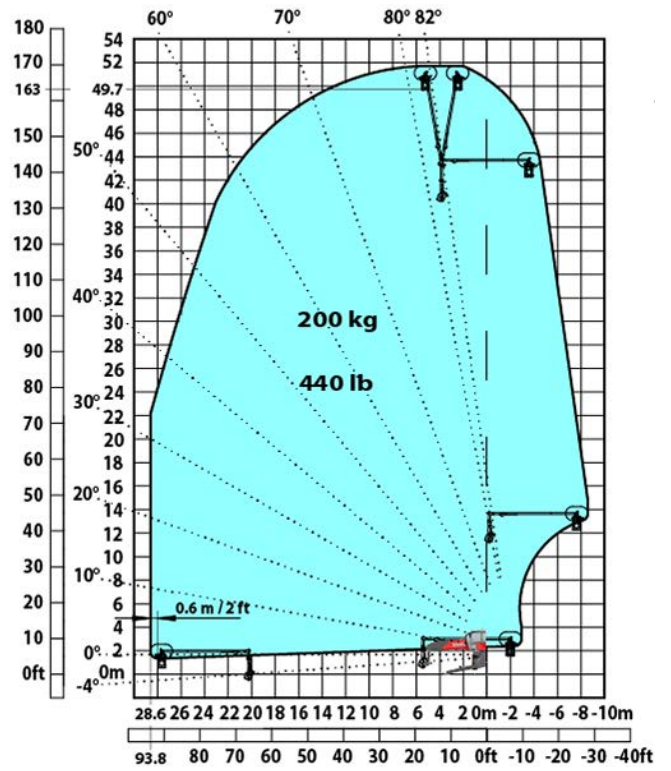
Machine on lowered stabilisers with 2000 kg jib
(P6000 2T)



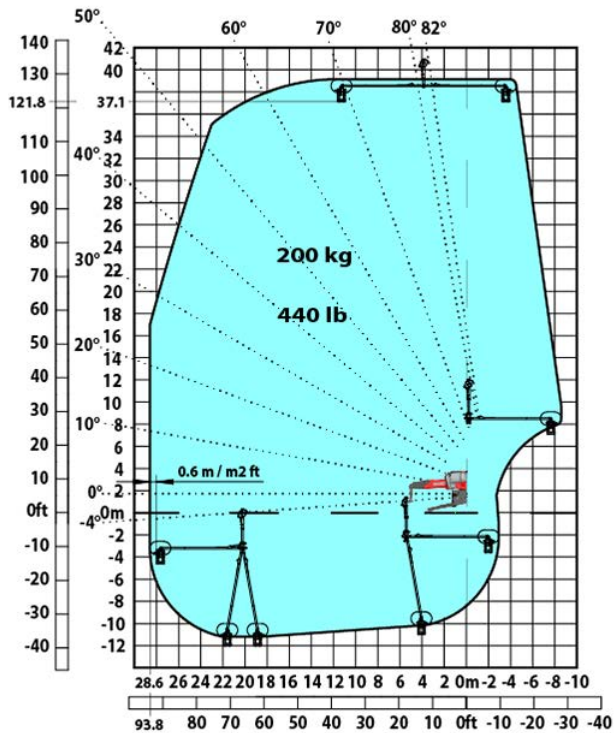
Machine on lowered stabilisers with 365 kg platform



Machine on lowered stabilisers with 3D positive



Machine on lowered stabilisers with 3D negative



**Head Office**

B.P. 249 - 430 rue de l'Aubinière
44150 Ancenis Cedex - France

Tel: +33 (0)2 40 09 10 11 - Fax: +33 (0)2 40 09 10 97

www.manitou.com



This publication provides a description of the configuration versions and options for Manitou products, which may differ for equipment. The equipment presented in this brochure may be part of a series, as an option, or it may not be available, depending on the versions. Manitou reserves the right, at any time and without notice, to amend the specifications described and represented. The specifications provided do not bind the manufacturer. For more details, please contact your Manitou agent. This is not a contractually binding document. The presentation of the products is not contractually binding. List of specifications non-exhaustive. The logos as well as the visual identity of the company are owned by Manitou and cannot be used without authorisation. All rights reserved. The photos and diagrams contained in this brochure are only provided for consultation and information purposes.

MANITOU BF SA - Limited company with board of directors - Share capital: 39,668,399 euros - 857 802 508 RCS Nantes